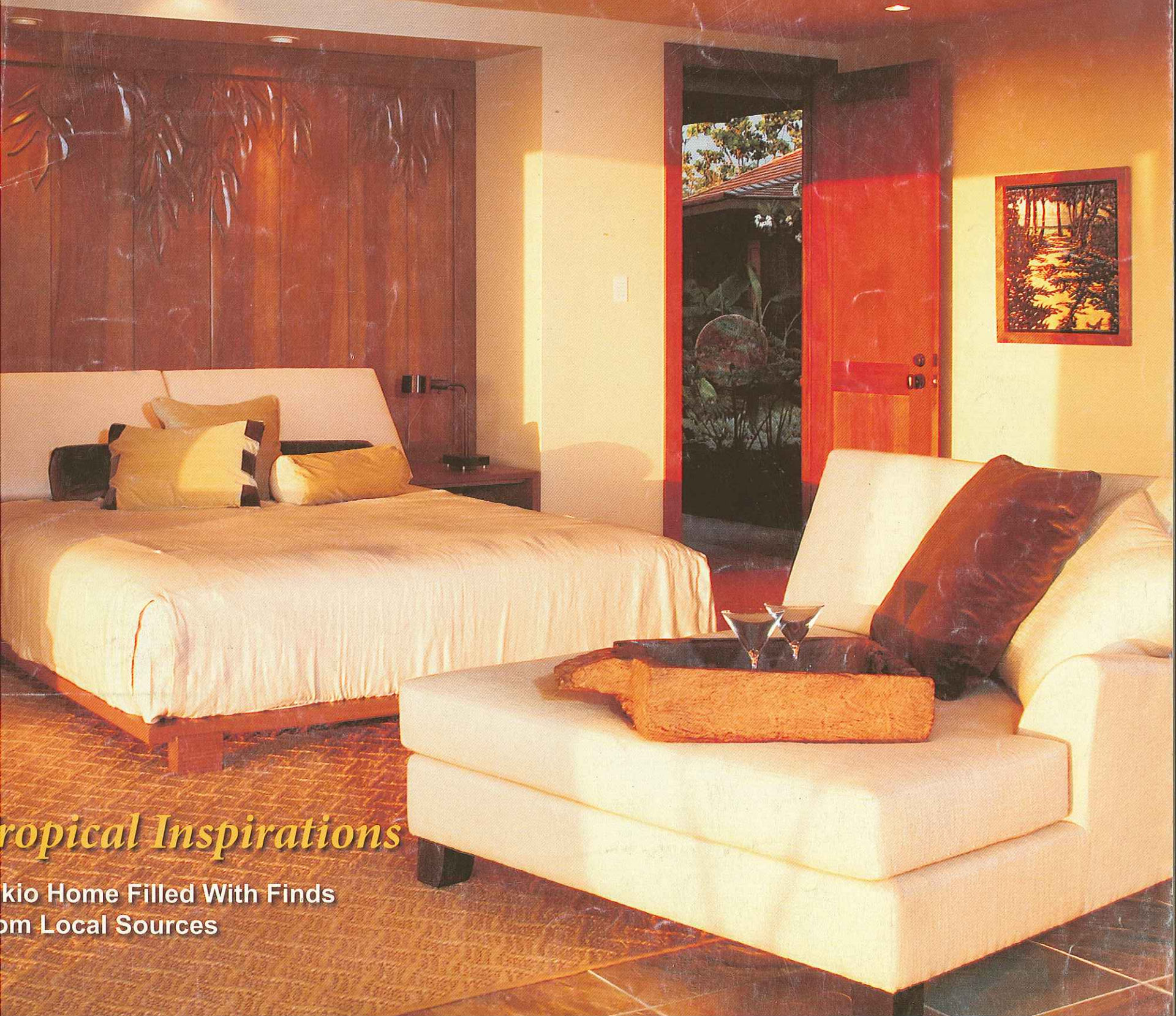


at home

Living with style in west hawaii



Tropical Inspirations

Kio Home Filled With Finds
From Local Sources

ISLAND TREASURES

Kukio Home Filled with Finds from Local Sources



Photo by Linny Morris

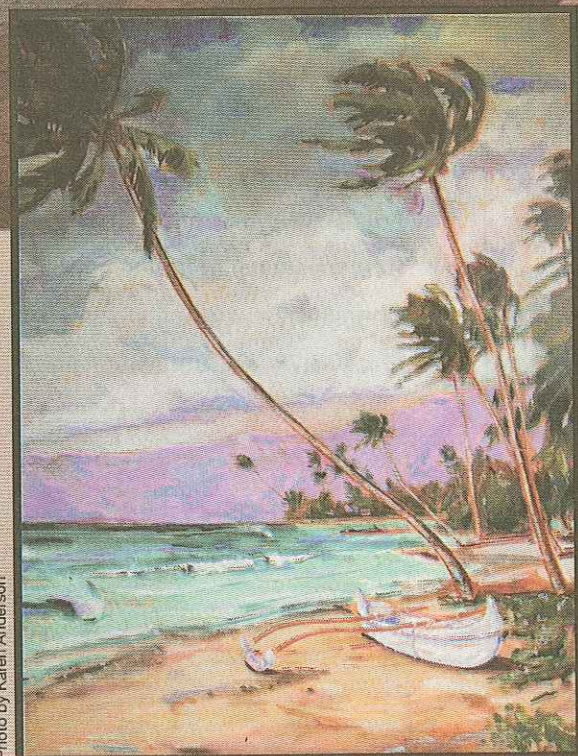


Photo by Karen Anderson

"Canoe at Paho Bay" by Puna artist Ezara Muir. (Top): The vintage pig board was purchased at Discovery Antiques in Kealahou and serves as a towel holder, poolside. Golden Ray quartzite decking is from Marblehaus Hawaii.

By Kristina Anderson

"Build Local, Furnish Local." That's the idea behind the Kukio home of Ted and Margarita Barrett, part-time Napoopoo residents who have recently completed a beautiful second home in this exclusive neighborhood north of the airport.

Though the misconception is that a high-end home in Kukio might typically rely on mainland sources for its upscale furnishings, the Barrett residence dispels this myth and is especially appealing for its remarkable patronage of local vendors and artists — supporting and acknowledging the Big Island community.

Nancy Gilleland, ASID, of Gilleland Interior Design Inc., oversaw the decor of the home, which is built in a pod-style, ►



Photo by Lirny Morris

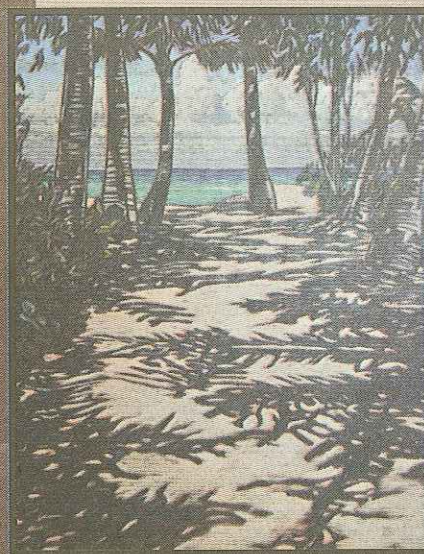


Photo by Karen Anderson

Tom Adolph of Honokaa painted "Path of Light," which hangs in the master suite.

"The homeowners wanted a unique destination that would incorporate the work of locally based artists within a comfortable living space,"
—Nancy Gilleland, interior designer.

The extraordinary master bathtub made of koa is the work of craftsman Mike Riddle of Ka'u, who also crafted the matching koa sinks. The idea was to evoke the image of an ancient canoe. The shampoo niche by the outdoor shower is from Jeanne Marie Imports.

Photo by Linny Morris



The office showcases pieces purchased at Jeanne Marie Imports. Antique Sumatran spears came from Baik Designs, with framing done by Kona Frame Shop.

tropical pavilion format. Using a neutral palette boosted with interesting textures, Nancy says the concept is geared toward soft tones that allow both the colorful landscaping and exceptional local artwork to “pop.”

Why this special attention to local artists and vendors?

“In their vision for the home, the homeowners wanted a unique destination that would incorporate the work of locally based artists within a comfortable living space,” explains Nancy. “We were able to find many key furniture pieces while gathering a gallery of area artwork and island treasures.”

Indeed, the products and artistry of the Kona community are on display in amazing abundance. Kailua-Kona-based supplier Indich Collection provided the Dhurrie area rug in a signature “Breadfruit” design. Gerald Ben of Dovetail Gallery & Design in Holualoa crafted the expansive 6’ x 6’ coffee table, carved in beautiful detail by Donald Craig of South Kona. Oversized ceramic vessels came from Nevara International, and numerous objects throughout the home hail from Jeanne Marie Imports. Island Lifestyle and Baik Designs were the source of much of the furniture. Indonesian throws on the beds were made with tapa designs originating from import clothier Noa Noa.

“I believe it’s important for people who want unique homes to have access to products locally,” Nancy says. “Fortunately, our import stores here in Kona are bringing in pieces that are one of a kind to fulfill those needs.”

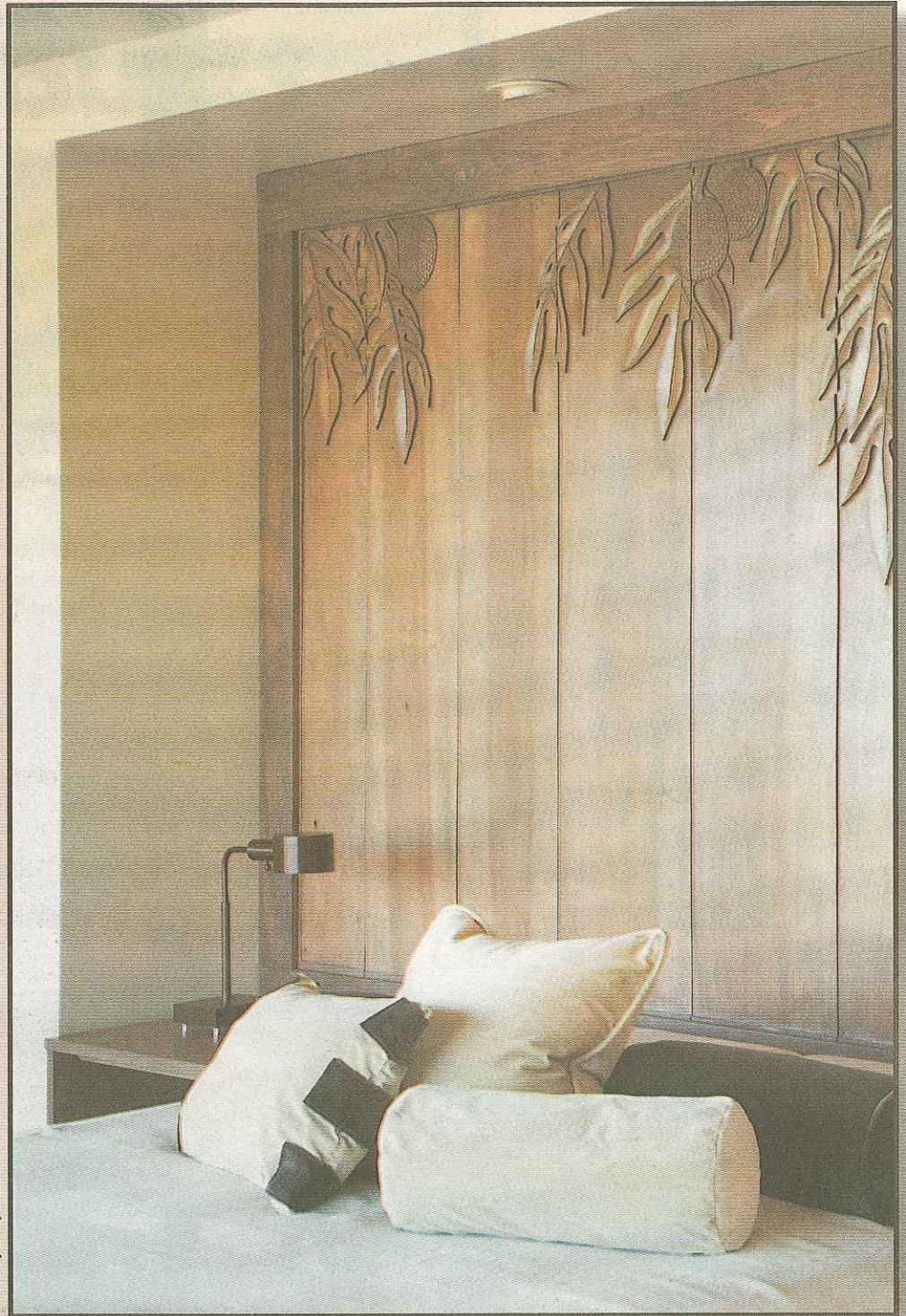


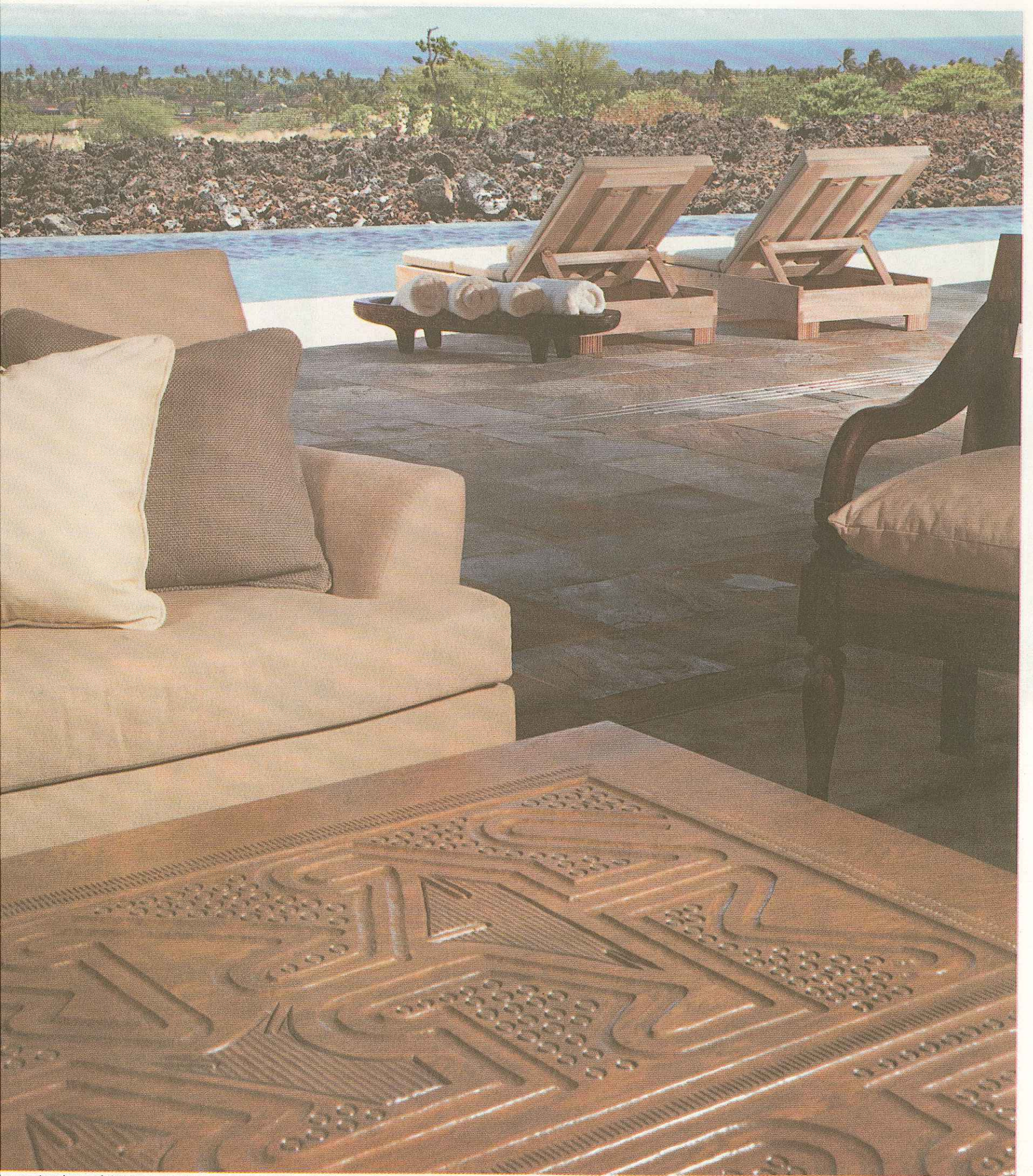
Photo by Linny Morris

The headboard in the master suite was crafted by Gerald Ben of Dovetail Gallery & Design in Holualoa, with breadfruit carving designed and hand-chiseled by Donald Craig of South Kona. An automated cushion platform lifts up for easy storage — masterminded by Chris Gilleland and Mike Godfrey of Kona.



The area rug in the living room features the signature breadfruit design from Indich Collection.

Photo by Karen Anderson



the centerpiece of the living room, an exquisitely carved table showcases the work of Gerald Ben and Donald Craig.



Photo by Linny Morris

"I believe it's important for people who want unique homes to have access to products locally," says Nancy Gilleland. "Fortunately, our import stores here in Kona are bringing in pieces that are one of a kind."

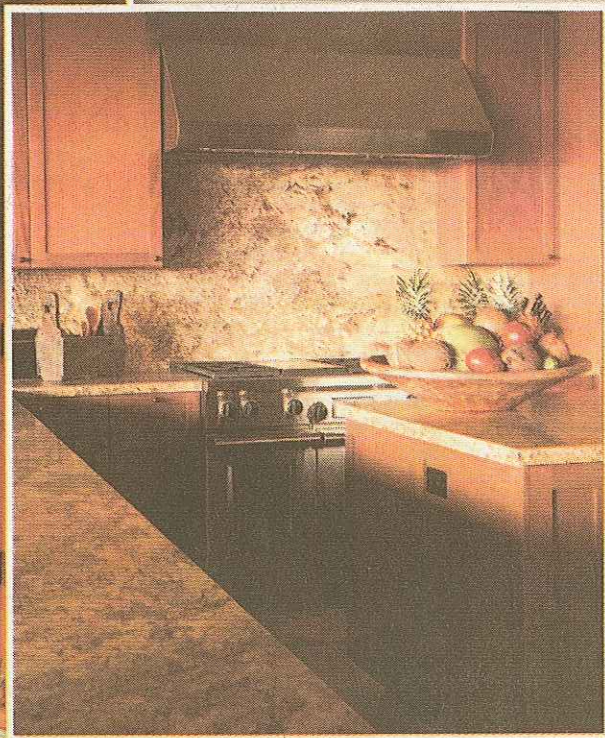


Photo by Linny Morris

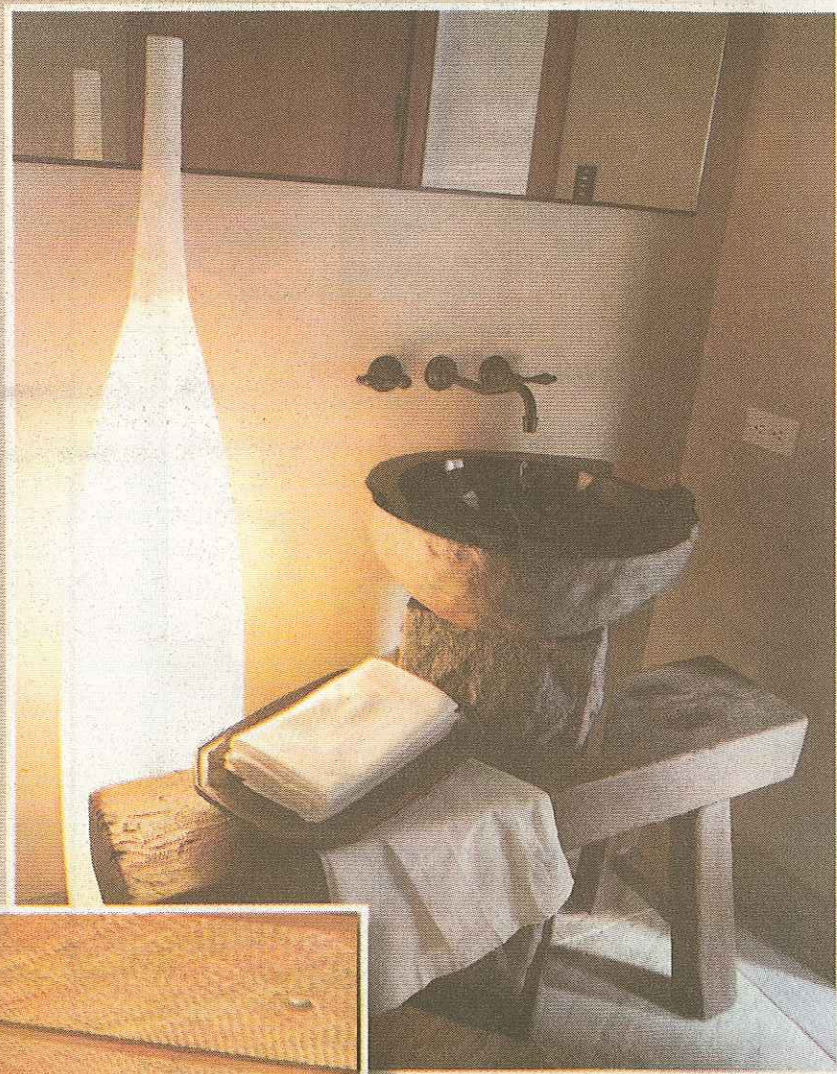


Photo by Linny Morris

The powder room features a vessel sink carved from a geode. The towel bench was purchased at Nevara International.

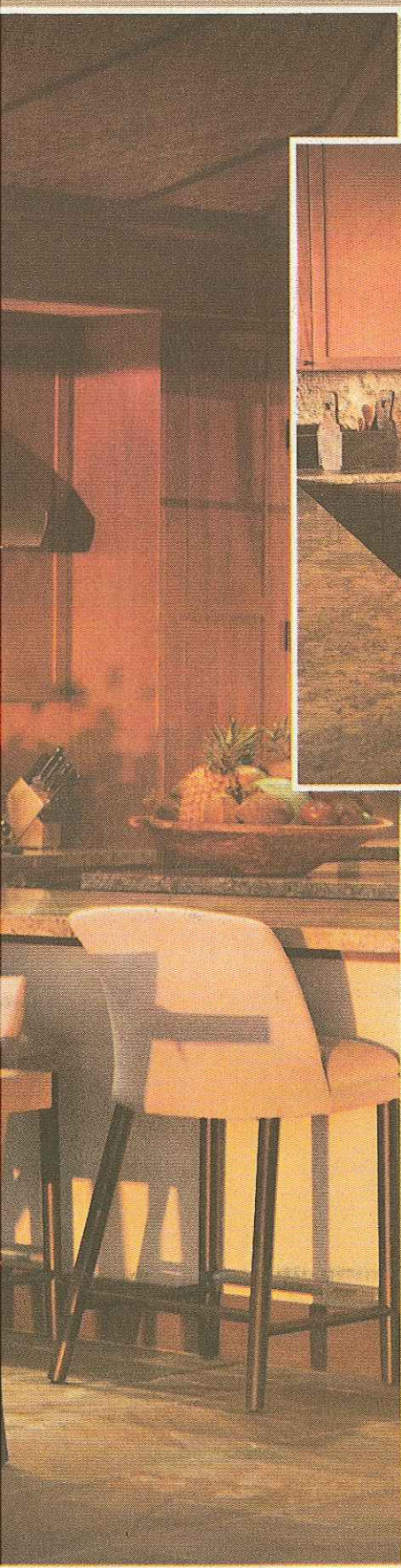


Photo by Linny Morris

"Yellow Beaches" granite is honed for a more rustic look in the kitchen, where cabinets made of African mahogany are a nice contrast to the quartzite flooring.



Photo by Linny Morris



Photo by Karen Anderson

Artist Lynn Capell of Kailua-Kona created a contemporary interpretation of island scenery entitled "Drop."

Vaulted ceilings lined with lauhala mats convey a kamaaina beachhouse feeling, while posts made of ohia are among the native materials found throughout the home.

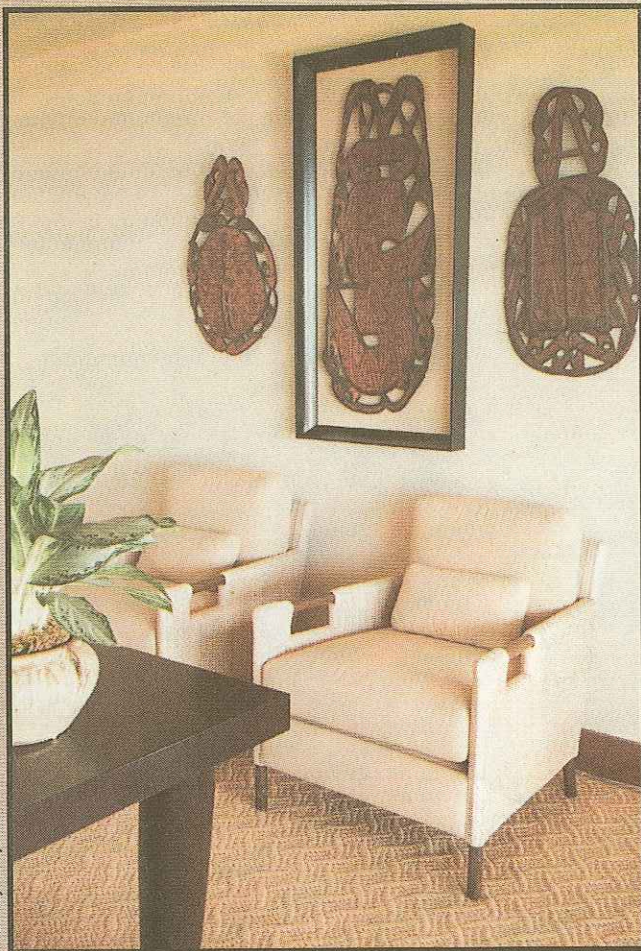


Photo by Linny Morris

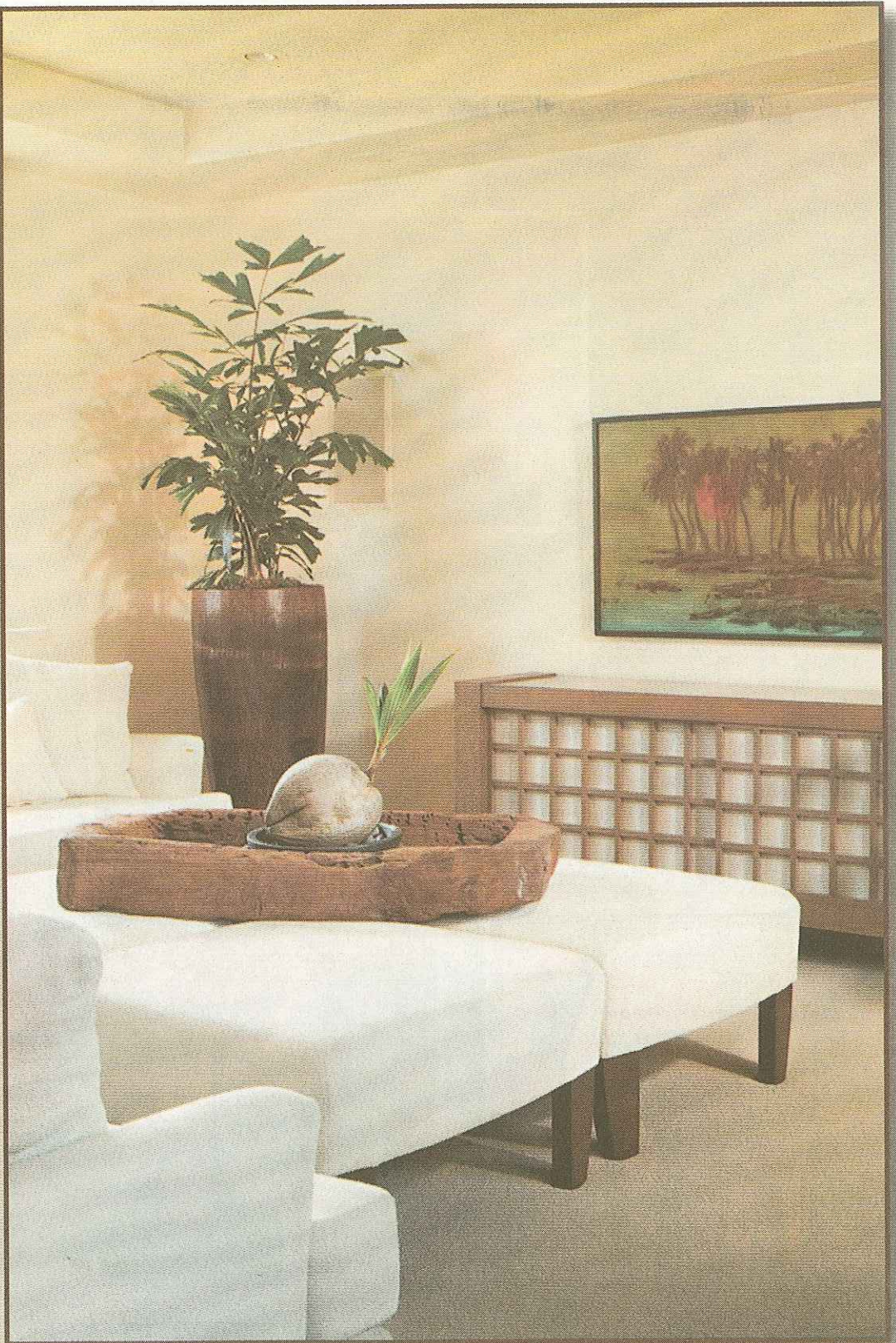
Irian Jaya carved shields from Indonesia hang in the office — purchased at Balk Designs.

Having clients like the Barretts was the perfect fit for Nancy's philosophy. Living in Kona for many years, the Barretts feel a sense of connection with all things Hawaiian.

"Maintaining Hawaiian culture is essential to us because of the natural beauty and simple, elegant nature that is here," says homeowner Ted Barrett. "We feel it's important to incorporate local artwork whenever possible to help support the community."

In some cases, Nancy used a little ingenuity to create custom pieces for the homeowner. For instance, she bought some vessels at Island Lifestyle and Koehnen's Interiors and had them made into lamps for just the right look. Never one to pass up finds at interesting local shops, Nancy found a vintage pig board used in luaus at Discovery Antiques in Kealahou. The pig board has been retired on the pool lanai as a place to keep towels.

There are also excellent examples of graceful and custom woodworks throughout. In addition to the living room table, Gerald Ben of Dovetail Gallery crafted the unusual master bedroom headboard featuring automated cushions that lift up for storage, installed and masterminded by Chris Gilleland and Mike Godfrey. The breadfruit carving on the headboard was designed and hand-chiseled by Donald Craig, who also hand-chiseled the wrap-around ►



Jeanne Marie Imports was the source for the enormous ceramic vessel in the media room. A Lynn Capell painting hangs on the wall.

"Maintaining Hawaiian culture is essential to us because of the natural beauty and simple, elegant nature that is here,"
Ted Barrett, homeowner



Photo by Linny Morris

The second master suite showcases a wrap-around nightstand handcrafted by Gerald Ben of Holualoa. Throws on the bed are from Noa Noa. The paddle came from P3 Polynesian Paddling Products in Kailua-Kona.

nightstand and other furniture in the second master suite.

The extraordinary master bathtub and sink made of koa are the work of Ka'u woodworker Mike Riddle. Crafted to evoke the image of an ancient canoe, the tub was conceived by Gregg Todd of GM Construction, designer and builder of the home.

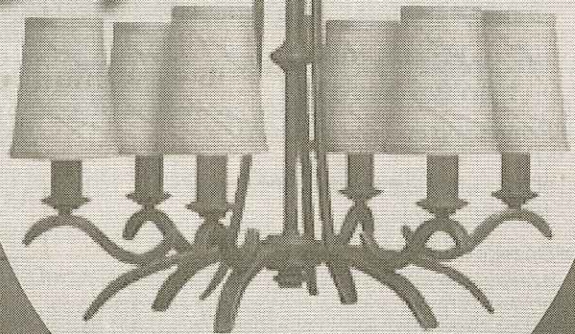
"I gave Mike a sketch of what I envisioned and he took it from there," said Gregg. "We wanted an old-time Hawaiian kamaaina feeling for the entire house and strived to use as many native materials as possible."

Gregg says the home features separate pods that open up to the outside, compelling residents to interact with the outside when venturing toward the media room, powder room and guest bedrooms. The idea was to create the feeling of an old Hawaiian village or a family beach house, where outdoor living is integral to the experience.

To showcase easy beach living, Gregg integrated natural Hawaiian elements such as ohia posts and the vaulted Polynesian-style ceilings lined with woven grass and lauhala mats — all of which work together to bring the occupant back to Hawaiian elements.

Gregg carried the rustic theme into the kitchen where honed granite countertops impart an aged look that differs

Light up your
Mother's
Day!



(808) 329-0748

M-F 8:30-5:00 • SAT 9:00-4:00

KONA COAST HOUSE OF LIGHTS INC.
73-5578 A. MAIAU ST, KAILUA-KONA, HI 96740



Jeanne Marie Imports

Complete Design and Installation Services Available

74-5583 Luhio St. 329-4818 Old Industrial Area



Photo by Linny Morris

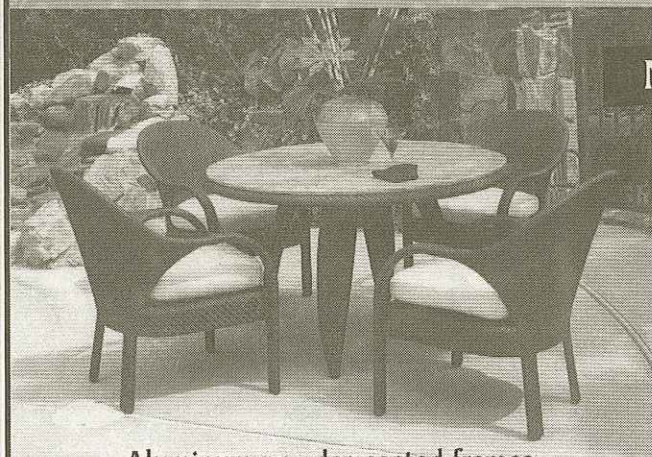
Designed by Gregg Todd of GM Construction in Kona, the pavilion-style home captures the feeling a Hawaiian village or old-time ohana beach house.



KOEHNENS interiors

Fine Furnishings • Art & Accessories
• Window & Wall Coverings • Design Services

BALI ALL WEATHER WICKER



Now in Stock

Available in:

- Dining Sets
- Bar Tables and Stools
- Lounge Seating and Tables

- Aluminum powder coated frames -
- UV protected HDPE (polyethylene) weaving -

Hilo Showroom
76 Kamehameha Ave.
(808) 961-4725

Kona Showroom
74-5555 Kaiwi St.
(808) 329-8122

Website:
www.koehnens.com

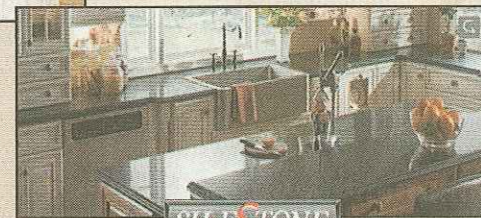
The Big Island's Most Complete Home Furnishing Center • Since 1929



GRANITE

3CM Granite "It's
Whats In"
and we have it!!!

- Introducing our new shipment of 3CM prefabricated panels 108 x 26 w/Splashes
- Dozens more 3CM color available in slabs



SILESTONE

"As smart as it is
beautiful"

- Built-in Microban
- 15 year warranty
- Exclusive Fabricators

**THERE ARE TWO
POPULAR TYPES OF
COUNTERTOPS
AND WE HAVE THEM BOTH**

Exclusive  Distributor

DAVIS
TILE & MARBLE, INC.

327-0028
74-5598 Alapa St.
Old Industrial Area

 NKBA
The Floor
Professional
In the Kitchen
& Bath Industry

from the more formal look of polished granite. Island-style quartzite flooring came from Marblehaus Hawaii, while ohia valances convey a decidedly tropical look.

The impressive art collection includes works by some of the most sought-after artists in Hawaii, most of whom reside on the Big Island. Among the artists on display include Kailua-Kona's own Lynn Capell and Andrea Pro, along with Honokaa-based Tom Adolph, Puna-based Ezara Muir and David Gallegos, and former Puna resident Avi Kiriatty. Renowned Japanese artist Masami Tsuchkawa is also featured.

For much of the artwork, Nancy procured the expert services of Kona Frame Shop. Even some of the unique plumbing fixtures were created right here in Kona by Ferguson Custom Fixtures.

Incorporating the flavor and essence of Kailua-Kona while supporting the local community, the home succeeds in making the Hawaii connection that the homeowners imagined.

"I feel the design of the house, along with the furnishings and artwork, are blended into a masterpiece," says Ted Barrett. "The house definitely gives into the surroundings and makes you feel right at home!" **AH**

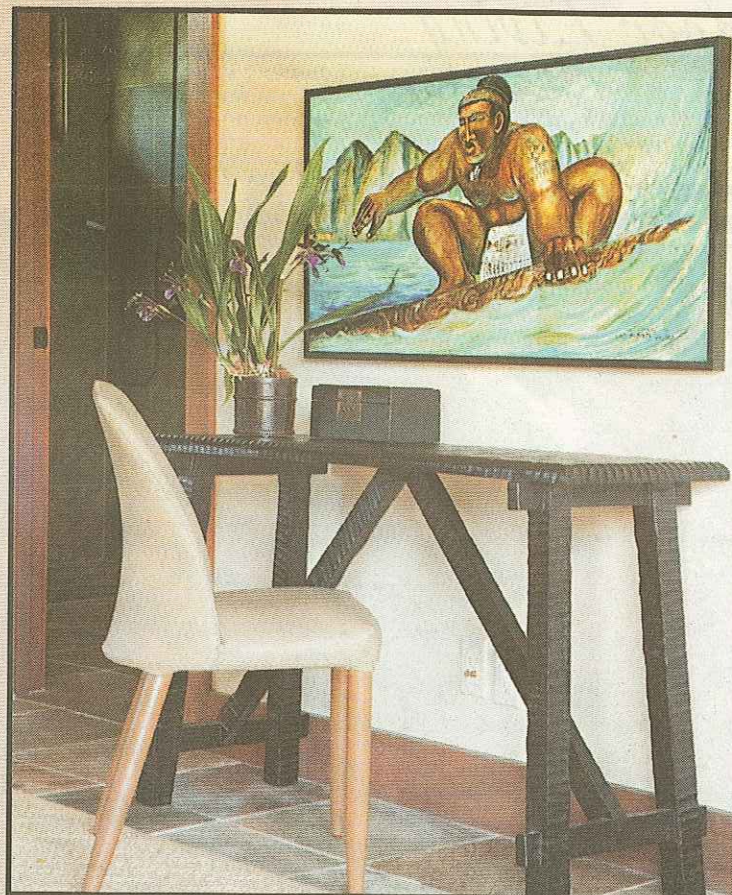


Photo by Linny Morris

An Avi Kiriatty giclee hangs in the guest bedroom above a table purchased at Island Lifestyle. Vases in the room came from Koehnen's Interiors.

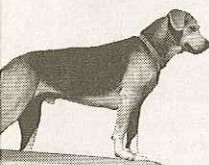
THINKING ABOUT SOLAR?

We are #1 for a reason...
You have always been able to count on us to get the job done *right!*

Call the Solar Water Heating Specialists that have been voted #1 in West Hawaii for 4 years in a row!

Start saving big, get huge Federal and State tax credits and help save the planet.

Ken & his staff went the extra mile (literally) for me. It's one of the few things that went smoothly during the construction of my house.
Many Thanks, E. Bowman, North Kohala



World's #1 Solar System

Hawaiian Solar, Plumbing & Spas

329-4044

75-5580 Maiau St., Bay "C"
Kailua-Kona, HI 96740 • Lic. C-17629



FITES FURNITURE

KALOKO LIGHT INDUSTRIAL
MON - SAT 9AM - 6PM
www.fitesfurniture.com